

SALACOA VALLEY FARMS • SPITZER RANCH
S_VF ALLIANCE S

• Two Operations with 52 Years in Business for the Professional Cattleman •
• Performance Genetics BUILT, not BOUGHT •

WINTER 2010 NEWSLETTER

WISHING YOU A VERY
MERRY CHRISTMAS
AND
BEST WISHES FOR A
GREAT NEW YEAR!
THE VAUGHAN FAMILY
AND BEN SPITZER AT
SALACOA VALLEY
FARMS
AND
THE SPITZER FAMILY
AT SPITZER RANCH!

SPITZER RANCH BULL SALE FEBRUARY 27, 2010

Please check pages 2 thru 4 of this newsletter for complete information on the 101 bulls on performance growth tests 2009-1 and 2009-2. Bulls in test 2009-1 were weighed for off test and yearling performance on October 30, 2009, while 2009-2 bulls had off test and yearling arithmetic collected December 11, 2009. You will note that the Test ADG for both

testing groups is somewhat less than in previous years. Mud, mud and more mud! This fall and winter have been one of the wettest on record at Fairmount, GA. A close neighbor who has always kept detailed rainfall records says he has recorded just over 75 inches so far in 2009. Normal rainfall is about 48-50 inches. David has lived on Salacoa Valley Farms his entire life and shared that Salacoa Creek has seldom been out of its banks in the past 30 years – it has flooded the entire bottom pastures five times now since September!

A long story short! Bulls never did get any rye/ryegrass grazing and the large fescue pastures they were grazing quickly turned to mud and slop. Pretty hard times when trying to get post weaning gain on calves. However, we did get enough gain to spread the ratios and those are the mathematics that goes into calculating differences among bulls and the EPD calculations. We have always reminded you that the EPDs published in the sale catalog included all the data we have collected on individual bulls and is much more important than actual weights and ratios. That is even truer with this set of bulls. Ultrasound scans have also been collected and we now await the Brangus Association Spring 2010

NCE computations.

We need to add one final note on EPDs. Data on pages 2 thru 4 are interim adjusted pedigree EPDs. The University of Georgia will conduct the Spring National Cattle Evaluation for the entire Brangus database the first week of January, 2010. Therefore, you will see some shift for the EPDs published in our Bull Sale Catalog which you will receive in early February, 2010.

The EPDs in the catalog will be absolutely the best “Genetic Snapshot” on these bulls as it will include all individual and pedigree performance information on the individual bulls and all their relatives. Between now and sale day, we will conduct a complete Breeding Soundness Evaluation (BSE) on every bull. They will also receive their final round of vaccinations and will be “turn-out-ready” on sale day.

These bulls will be the most uniform, profit oriented bulls to sell anywhere in the country. Our goal when we formed the Salacoa Valley Farms • Spitzer Ranch Alliance was to provide a wider opportunity for our customers to purchase bulls at both a fall and a spring sale. Please mark your calendars, we promise you won't want to miss this opportunity to purchase curve bender genetics in volume.

OUR LEGACY: the Land, the Family, the Cattle (NCBA)

SALACOA VALLEY FARMS-SPITZER RANCH ALLIANCE PROGRAM TEST 2009-1

168-Day Report ~ October 30, 2009

TEST TAG	ID Number	Sire	EPDs										Birth			Adj 205 Weaning			OnTest			168-Days					Adj 365-Day Yearling			
			BW	WW	YW	MK	TM	SC	REA	%IMF	FAT	Date	WT	WT	WT	Ratio	NC	WT	WT	WT	Age	WT	ADG	Ratio	WDA	Ratio	SC	FS	WT	Ratio
9101	U523	PR Elixir 698L3	-2.2	23	37	13	24	0.2	0.14	0.090	0.006	10/03/08	72	575	104	24	604	392	1045	2.63	98	2.67	97	31.8	6.6	995	101	17		
9102	U525	PR Elixir 698L3	0.6	32	53	8	24	0.6	0.42	0.090	0.011	10/06/08	82	634	100	1	688	389	1045	2.13	80	2.69	98	36.0	5.7	982	100	1		
9103	U540	Cadence of Brinks 535D3	-0.1	34	57	26	43	0.8	0.55	0.070	0.000	10/08/08	92	654	117	28	692	387	1225	3.17	119	3.17	115	37.6	6.2	1,162	114	20		
9104	U544	PR Elixir 698L3	-2.2	26	41	8	21	0.1	0.11	0.080	0.007	10/09/08	74	597	108	24	630	386	1045	2.47	92	2.71	99	30.6	5.7	992	101	17		
9105	U549	PR Elixir 698L3	0.6	28	48	4	18	0.4	0.10	0.080	0.008	10/09/08	82	546	99	24	562	386	1070	3.02	113	2.77	101	38.3	6.7	1,030	104	17		
9106	U552	Cadence of Brinks 535D3	-0.3	38	63	16	35	0.5	0.60	0.010	0.002	10/10/08	76	616	111	28	648	385	1180	3.17	118	3.06	112	36.2	7.2	1,123	110	20		
*9107	U553	PR Elixir 698L3	NA	NA	NA	NA	NA	NA	NA	NA	NA	10/10/08	78	647	110	5	680	385	1105	2.53	95	2.87	105	NA	7.4	1,052	108	5		
*9108	U554	PR Elixir 698L3	NA	NA	NA	NA	NA	NA	NA	NA	NA	10/11/08	76	609	104	5	638	384	1030	2.33	87	2.68	98	NA	6.7	982	101	5		
9109	U555	Cadence of Brinks 535D3	-1.4	23	42	21	32	0.4	0.52	0.080	-0.004	10/11/08	80	534	96	28	542	384	1095	3.29	123	2.85	104	36.1	6.7	1,061	104	20		
9110	U559	PR Elixir 698L3	-1.6	25	41	6	19	0.2	0.12	0.090	0.007	10/11/08	72	575	104	24	598	384	1060	2.75	103	2.76	101	35.0	6.7	1,015	103	17		
9111	U560	Cadence of Brinks 535D3	-0.7	28	46	23	37	0.3	0.42	-0.030	-0.004	10/11/08	70	569	102	28	596	384	1240	3.83	143	3.23	118	37.2	7.0	1,182	116	20		
9112	U561	Cadence of Brinks 535D3	-2.0	27	46	18	31	0.3	0.43	NA	-0.001	10/11/08	70	529	95	28	554	384	954	2.38	89	2.48	91	31.2	6.2	910	89	20		
9113	U563	PR Elixir 698L3	-0.7	31	49	7	23	0.2	0.12	0.090	0.007	10/11/08	74	636	115	24	648	384	1080	2.57	96	2.81	103	35.1	6.7	1,047	106	17		
*9114	U567	PR Elixir 698L3	NA	NA	NA	NA	NA	NA	NA	NA	NA	10/12/08	78	576	98	5	600	383	970	2.20	82	2.53	92	NA	5.9	928	95	5		
9115	U568	PR Elixir 698L3	-1.7	25	39	8	21	0.1	0.11	0.080	0.007	10/12/08	76	568	103	24	576	383	992	2.48	93	2.59	95	41.7	6.2	964	98	17		
9116	U570	PR Elixir 698L3	-1.0	26	42	9	22	0.2	0.12	0.090	0.008	10/12/08	72	583	106	24	592	383	1045	2.70	101	2.73	100	30.7	5.7	1,014	103	17		
9117	U572	Cadence of Brinks 535D3	-0.2	29	51	18	32	0.6	0.59	0.030	0.001	10/13/08	88	585	105	28	606	382	1050	2.64	99	2.75	100	37.3	6.5	1,008	99	20		
*9118	U579	PR Elixir 698L3	NA	NA	NA	NA	NA	NA	NA	NA	NA	10/14/08	90	556	95	5	574	381	1020	2.65	99	2.68	98	NA	6.0	980	101	5		
*9119	U584	PR Elixir 698L3	NA	NA	NA	NA	NA	NA	NA	NA	NA	10/14/08	64	547	93	5	566	381	954	2.31	86	2.50	91	NA	5.0	917	94	5		
9120	U585	PR Elixir 698L3	-1.1	27	46	11	25	0.8	0.30	0.220	0.004	10/15/08	78	567	102	28	570	380	1080	3.04	114	2.84	104	35.1	6.8	1,053	103	20		
9121	U590	PR Elixir 698L3	-0.6	28	48	9	23	0.3	0.13	0.090	0.006	10/16/08	72	601	109	24	616	379	1050	2.58	97	2.77	101	32.4	6.8	1,014	103	17		
9122	U597	Uppercut of Brinks 14J8	-1.5	16	34	14	21	1.1	0.30	0.100	-0.008	10/18/08	80	545	98	28	554	377	1040	2.89	108	2.76	101	37.5	5.3	1,008	99	20		
9123	U602	PR Elixir 698L3	0.0	29	45	13	27	0.2	0.12	0.090	0.007	10/20/08	88	623	113	24	628	375	1085	2.72	102	2.89	106	30.6	6.8	1,058	107	17		
9124	U603	PR Elixir 698L3	1.4	40	67	7	27	0.7	0.50	0.080	0.008	10/20/08	95	567	102	28	572	375	988	2.48	93	2.63	96	34.6	6.8	963	94	20		
9125	U606	Jesse of Brinks 392P105	-0.4	26	52	9	22	0.5	0.54	0.070	0.010	10/21/08	74	587	105	28	590	374	968	2.25	84	2.59	94	35.1	5.3	947	93	20		
9126	U611	SR Cadence Warrior S702	0.1	25	47	11	24	0.5	0.23	-0.030	-0.004	10/27/08	82	517	94	24	506	368	990	2.88	108	2.69	98	37.4	6.4	978	99	17		
9127	U615	SR Eureka Warrior S614	-1.8	12	28	11	17	0.1	0.09	0.010	-0.001	10/30/08	82	534	97	24	502	365	1015	3.05	114	2.78	101	36.8	7.2	1,023	104	17		
9128	U617	SR Cadence Warrior S702	0.3	27	48	10	24	0.5	0.23	-0.030	-0.004	10/30/08	88	558	101	24	540	365	1035	2.95	110	2.84	103	37.0	7.0	1,029	104	17		
9129	U619	SR Eureka Warrior S614	-0.6	17	36	11	19	0.2	0.11	0.020	-0.001	10/31/08	86	556	101	24	520	364	1055	3.18	119	2.90	106	36.4	7.5	1,066	108	17		
9130	U622	PR Elixir 698L3	-2.2	29	48	14	28	0.3	0.31	0.080	0.009	11/01/08	80	601	108	28	576	363	1030	2.70	101	2.84	104	34.1	5.7	1,033	101	20		
9131	U623	SR Cadence Warrior S702	-2.3	21	39	20	31	0.5	0.35	-0.020	-0.005	11/01/08	72	552	100	24	528	363	922	2.35	88	2.54	93	34.6	5.5	927	94	17		
9132	U624	SR Cadence Warrior S702	0.8	36	59	13	31	0.4	0.23	-0.030	-0.004	11/01/08	86	652	118	24	624	363	1160	3.19	119	3.20	117	37.6	8.0	1,162	118	17		
9133	U628	SR Tatanka Warrior P425	-0.5	11	29	11	17	0.3	0.48	0.120	-0.004	11/03/08	82	556	100	28	528	361	1005	2.84	106	2.78	102	32.2	6.0	1,010	99	20		
9134	U629	Uppercut of Brinks 14J8	-1.0	21	41	11	22	1.2	0.24	0.060	-0.009	11/04/08	68	653	117	28	616	360	1100	2.88	108	3.06	111	37.7	7.0	1,114	109	20		
9135	U634	Uppercut of Brinks 14J8	-0.1	17	34	4	12	1.0	0.20	0.060	-0.006	11/07/08	92	562	101	28	522	357	1015	2.93	110	2.84	104	38.0	7.1	1,032	101	20		
9136	U639	PR Elixir 698L3	0.3	33	53	5	21	0.8	0.20	0.130	0.007	11/10/08	92	595	107	28	534	354	990	2.71	102	2.80	102	39.4	6.1	1,029	101	20		
9137	U654	PR Elixir 698L3	1.1	35	63	7	24	0.7	0.56	0.180	0.013	11/19/08	92	565	101	28	492	345	1045	3.29	123	3.03	111	36.1	6.7	1,092	107	20		
9138	U659	TCB Catawba Warrior R532	0.2	39	70	11	31	0.7	0.58	0.080	0.007	11/20/08	82	587	105	28	493	344	1025	3.17	118	2.98	109	37.3	6.2	1,094	107	20		

SALACOA VALLEY FARMS-SPITZER RANCH ALLIANCE PROGRAM TEST 2009-1

168-Day Report ~ October 30, 2009

TEST TAG	ID Number	Sire	EPDs										Birth		Adj 205 Weaning			On Test		168-Days				Adj 365-Day Yearling				
			BW	WW	YW	MK	TM	SC	REA	%IMF	EAT	Date	WT	NC	WT	Ratio	NC	WT	Ratio	WT	Ratio	WT	Ratio	WT	Ratio	WT	Ratio	WT
9139	U677	SVF Mr 44S6	-0.7	27	54	18	31	0.2	0.37	-0.020	-0.003	11/27/08	76	576	103	28	478	101	2.76	101	2.69	930	337	35.4	5.8	1,006	98	20
9140	U688	SR Eureka Warrior S614	-2.5	10	27	11	16	0.2	0.08	0.010	-0.002	11/30/08	70	534	97	24	436	93	2.54	93	2.45	848	334	29.6	4.4	926	94	17
9141	U694	TCB Catawba Warrior R532	1.0	34	58	16	33	0.5	0.40	-0.040	0.004	12/03/08	100	601	108	28	498	105	2.92	105	2.80	968	331	38.4	5.9	1,049	103	20
9142	U697	TCB Catawba Warrior R532	0.1	35	60	14	31	0.8	0.56	0.080	-0.001	12/04/08	84	635	114	28	512	113	3.11	114	3.05	1025	330	38.7	6.4	1,124	110	20
9143	U698	SR Eureka Warrior S614	-3.0	12	29	11	17	0.1	0.09	0.010	-0.002	12/04/08	66	565	102	24	449	83	2.48	83	2.21	820	330	31.2	6.4	918	93	17
9147	U510	Cadence of Brinks 535D3	-3.0	21	44	18	29	0.4	0.56	0.120	0.001	09/19/08	58	496	94	10	518	86	2.23	86	2.30	904	406	NA	5.5	864	91	8
9148	U516	Cadence of Brinks 535D3	-1.4	26	50	20	33	0.4	0.53	0.110	-0.002	09/26/08	68	527	100	10	526	86	2.29	86	2.31	914	399	29.9	5.5	897	95	8
9149	U519	Uppercut of Brinks 14J8	-1.1	20	44	2	11	1.2	0.41	0.110	-0.009	09/27/08	68	518	98	10	514	94	2.59	94	3.07	1030	398	31.9	6.1	1,009	106	8
9150	U529	Cadence of Brinks 535D3	-1.4	25	49	22	35	0.1	0.52	0.030	-0.005	10/06/08	76	527	100	1	562	108	2.69	108	2.88	1045	389	31.0	5.7	954	100	1
9151	U531	PR Ellixir 698L3	0.6	28	52	8	22	0.4	0.24	0.050	0.004	10/06/08	90	572	101	22	610	83	2.53	83	2.23	984	389	33.0	6.2	928	96	15
9152	U533	SVF Mr Cadence 23S86	-1.4	38	52	20	35	0.5	NA	NA	NA	10/06/08	74	585	111	10	570	108	2.71	108	2.89	1055	389	29.8	5.2	1,047	111	8
#9153	U537	N Bar Prime Time D806	0.4	39	78	23	43	0.5	0.12	NA	NA	10/07/08	62	543	100	1	578	88	2.42	88	2.15	940	388					
9154	U539	SVF Mr Cadence 23S86	-1.4	32	52	14	30	0.6	NA	NA	NA	10/08/08	80	565	107	10	542	94	2.57	94	2.70	996	387	32.9	5.2	997	105	8
9155	U547	Cadence of Brinks 535D3	-0.8	32	54	14	29	0.6	0.44	0.030	-0.005	10/09/08	78	544	96	22	574	93	2.57	93	2.49	992	386	28.1	6.7	942	97	15
9156	U586	PR Ellixir 698L3	0.6	38	61	6	25	0.6	0.27	0.110	0.007	10/15/08	98	641	113	22	660	102	2.95	102	2.74	1120	380	33.9	5.8	1,079	111	15
9157	U587	Cadence of Brinks 535D3	0.0	25	40	21	34	0.1	0.38	0.050	-0.002	10/15/08	90	546	96	22	562	88	2.52	88	2.36	958	380	32.9	6.3	923	95	15
9158	U621	Cadence of Brinks 535D3	-1.1	26	46	12	25	0.4	0.35	0.060	-0.002	11/01/08	82	538	95	22	512	99	2.72	99	2.83	988	363	32.8	6.5	991	102	15
9159	U635	PR Ellixir 698L3	-0.9	31	50	0	15	0.5	0.09	0.090	0.005	11/07/08	74	612	108	22	562	80	2.58	80	2.14	922	357	32.0	7.6	955	98	15
9160	U645	Brinks Lead Gun 488R	-3.1	13	33	10	16	0.5	0.19	0.000	-0.008	11/12/08	66	563	99	22	512	92	2.63	92	2.45	924	352	32.5	6.6	955	98	15
9161	U656	TCB Catawba Warrior R532	0.9	42	71	19	40	0.6	0.39	-0.020	0.001	11/20/08	94	660	116	22	580	82	2.76	82	2.19	948	344	34.9	5.7	1,010	104	15
9162	U663	PR Ellixir 698L3	0.7	33	56	9	25	0.3	0.25	0.170	0.007	11/23/08	80	627	111	22	534	96	2.83	96	2.56	964	341	33.8	7.3	1,037	107	15
9163	U668	PR Ellixir 698L3	-1.4	27	46	8	22	0.6	0.16	0.110	0.008	11/23/08	70	573	101	22	488	93	2.65	93	2.48	904	341	33.3	6.3	969	100	15
9164	U673	TCB Catawba Warrior R532	-0.7	28	54	16	30		0.56	0.120	-0.003	11/27/08	72	615	108	22	520	104	2.93	104	2.79	989	337	36.6	6.3	1,062	109	15
9165	U679	PR Ellixir 698L3	-0.1	23	41	10	22	0.5	0.28	0.090	0.006	11/27/08	80	569	100	22	483	97	2.73	97	2.60	920	337	32.1	5.3	985	101	15
9166	U681	TCB Catawba Warrior R532	1.1	44	74	10	32	0.7	0.67	0.030	0.002	11/28/08	80	668	100	1	562	74	2.66	74	1.98	894	336	32.5	6.4	992	100	1
9167	U683	PR Ellixir 698L3	1.5	39	62	9	29	0.9	0.06	0.040	0.006	11/29/08	96	651	115	22	548	105	3.04	105	2.81	1020	335	29.7	5.9	1,101	113	15
9168	U684	PR Ellixir 698L3	0.9	32	54	10	26	0.5	0.28	0.230	0.006	11/29/08	86	537	102	10	453	113	2.87	113	3.02	960	335	36.2	6.4	1,020	108	8
9169	U685	Brinks Lead Gun 488R	-1.3	15	30	5	12	0.7	0.41	-0.010	-0.002	11/30/08	78	542	96	22	454	77	2.40	77	2.06	800	334	31.3	5.9	872	90	15
9170	U689	SR Tatanka Warrior P425	-1.0	17	41	13	22	0.4	0.50	-0.010	-0.002	11/30/08	80	587	103	22	488	116	3.02	116	3.11	1010	334	32.8	6.4	1,084	112	15
9171	U690	PR Ellixir 698L3	0.8	29	48	11	26	0.4	0.26	0.160	0.007	11/30/08	82	549	104	10	448	80	2.42	80	2.14	808	334	30.6	4.9	892	94	8
9172	U701	Brinks Lead Gun 488R	-0.2	19	39	4	14	0.5	0.43	0.060	-0.005	12/04/08	100	552	105	10	457	99	2.71	99	2.60	894	330	33.4	5.9	968	102	8
Total Bulls			-0.6	25	45	11	24	0.4	0.29	0.057	0.001		80	579	104		555	100	2.74	100	2.67	1,004	367	31.3	6.3	1008	102	

NOTE: Bull with # before Test Tag is a Registered Angus Bull.

NOTE: Bulls with * before Test Tag are Unregisterable Brangus Bulls.

NOTE: Bulls 9106 (U552), 9118 (U579) and 9124 (U603) are Red Brangus Bulls.

SALACOA VALLEY FARMS-SPITZER RANCH ALLIANCE PROGRAM TEST 2009-2

168-Day Report ~ December 11, 2009

TEST TAG	ID Number	Sire	EPDs										Birth		Adj 205 Weaning			On Test		168-Days				Adj 365-Day Yearling				
			BW	WW	YW	MK	TM	SC	REA	%IMF	EAT	Date	WT	WT	WT	Ratio	NC	WT	WT	Age	WT	ADG	Ratio	WDA	Ratio	SC	FS	WT
9201	U350	SR Cadence Warrior S702	-0.3	24	44	13	25	0.4	0.23	-0.030	-0.004	10/13/08	76	597	100	1	701	424	1210	3.03	114	2.85	101	36.7	6.9	1,300	100	1
9202	U351	Uppercut of Brinks 14J8	-1.6	17	36	9	18	1.3	0.19	0.150	-0.003	10/29/08	74	588	100	1	612	408	1145	3.17	119	2.81	99	37.5	6.4	1,095	100	1
9203	U357	Uppercut of Brinks 14J8	-0.2	24	46	8	20	1.3	0.25	0.130	-0.001	11/11/08	80	588	98	10	584	395	1040	2.71	102	2.63	93	37.6	5.1	1,022	99	8
9204	U362	Uppercut of Brinks 14J8	0.7	26	50	12	25	1.3	0.32	0.100	-0.001	11/16/08	94	685	110	12	734	390	1205	2.80	105	3.09	109	38.0	5.9	1,133	108	8
9205	U363	Aces TF Wrangler 145J8	0.1	25	50	16	29	0.5	0.35	0.110	0.007	11/19/08	84	666	107	12	670	387	1095	2.53	95	2.83	100	32.5	5.7	1,071	102	8
9206	U364	Uppercut of Brinks 14J8	-1.0	20	39	8	18	1.2	0.24	0.140	-0.003	11/20/08	86	590	95	12	622	386	1055	2.56	97	2.73	97	30.1	5.2	1,002	95	8
9207	U367	SR Cadence Warrior R568	-2.4	24	45	20	32	0.3	0.41	-0.070	-0.008	11/21/08	66	674	113	10	654	385	1090	2.60	98	2.83	100	33.0	6.2	1,089	106	8
9208	U368	Uppercut of Brinks 14J8	0.7	25	50	9	22	1.3	0.28	0.090	-0.005	11/23/08	90	647	104	12	642	383	1095	2.70	101	2.86	101	35.2	6.7	1,078	103	8
9209	U370	Cadence of Brinks 535D3	-0.9	24	42	20	32	0.6	0.33	0.050	-0.004	11/24/08	82	616	99	12	638	382	1085	2.66	100	2.84	100	34.3	6.2	1,042	99	8
9210	U375	Uppercut of Brinks 14J8	1.3	26	50	6	19	1.3	0.26	0.110	-0.002	11/28/08	96	620	100	12	600	378	1115	3.07	115	2.95	104	37.9	6.5	1,110	106	8
9211	U377	SR Cadence Warrior R568	-1.8	28	49	17	30	0.3	0.42	-0.040	-0.008	12/03/08	70	667	112	10	614	373	1080	2.77	104	2.90	102	34.0	6.9	1,111	108	8
9212	U379	SR Cadence Warrior R568	-1.9	25	50	15	28	0.4	0.36	-0.030	-0.005	12/06/08	64	654	105	12	616	370	1060	2.64	99	2.86	101	29.7	5.4	1,077	102	8
9213	U380	SR Tatanka Warrior P425	-1.4	18	36	20	29	0.4	0.44	0.030	-0.001	12/09/08	84	661	106	12	644	367	1055	2.45	92	2.87	102	32.4	5.4	1,052	100	8
9214	U381	SR Cadence Warrior R568	-0.3	30	55	11	26	0.3	0.48	-0.020	-0.005	12/11/08	74	601	101	10	530	365	1030	2.98	112	2.82	100	32.8	5.5	1,077	105	8
9215	U382	SR Cadence Warrior R568	-0.9	29	55	11	26	0.4	0.40	-0.010	-0.002	12/11/08	62	604	101	10	534	365	1070	3.19	120	2.93	104	31.8	6.2	1,114	108	8
9216	U386	SR Cadence Warrior R568	-3.1	24	47	17	29	0.4	0.47	-0.010	-0.008	12/17/08	56	597	100	10	512	359	880	2.19	82	2.45	87	28.5	5.0	947	92	8
9217	U387	SR Cadence Warrior R568	0.2	32	58	13	29	0.3	0.47	-0.040	-0.001	12/18/08	82	625	105	10	538	358	1045	3.02	114	2.92	103	32.6	7.1	1,108	108	8
9218	U388	SR Cadence Warrior R568	0.1	34	57	15	32	0.5	0.46	-0.020	-0.010	12/20/08	76	642	108	10	548	356	920	2.21	83	2.58	91	32.2	5.3	996	97	8
9219	U402	Aces TF Wrangler 145J8	-0.4	29	49	18	33	0.7	0.26	0.050	0.005	11/18/08	92	765	106	3	814	388	1140	1.94	73	2.94	104	32.1	7.2	1,075	102	3
9220	U406	Uppercut of Brinks 14J8	-1.9	25	49	13	25	0.5	0.40	0.090	0.003	12/20/08	92	694	97	3	644	356	1065	2.51	94	2.99	106	36.4	7.3	1,095	104	3
9221	U407	SR Cadence Warrior H823	-2.2	17	40	8	17	1.3	0.25	0.090	-0.003	12/25/08	83	698	97	3	624	351	932	1.83	69	2.66	94	33.9	6.4	991	94	3
9222	U441	SR Cadence Warrior P456	0.2	32	62	16	32	0.5	0.42	-0.050	-0.005	11/24/08	83	613	98	5	632	382	1025	2.34	88	2.68	95	29.5	6.2	987	95	4
9223	U446	SR Cadence Warrior P456	0.0	32	61	16	32	0.5	0.44	-0.040	-0.004	11/30/08	75	663	106	5	660	376	1155	2.95	111	3.07	109	31.8	7.3	1,134	109	4
9224	U448	SR Cadence Warrior P456	0.6	35	63	18	36	0.5	0.49	-0.020	0.002	12/18/08	75	615	98	5	568	358	970	2.39	90	2.71	96	32.6	6.1	998	96	4
9225	U883	SR Cadence Warrior P456	0.4	28	54	21	35	0.5	0.37	-0.009	-0.003	12/05/08	78	672	107	5	656	371	1110	2.70	102	2.99	106	36.6	5.4	1,104	106	4
9226	U709	Brinks Lead Gun 488R	-2.9	18	40	13	22	0.5	0.52	0.040	0.000	12/11/08	74	605	110	10	576	365	982	2.42	91	2.69	95	32.3	5.0	992	101	7
9227	U711	PR ELIXIR 698L3	1.0	36	57	6	24	0.3	0.27	0.000	0.005	12/12/08	92	598	109	10	576	364	1050	2.82	106	2.88	102	33.5	5.7	1,049	107	7
9228	U714	SR Tatanka Warrior P425	-0.7	30	44	4	19	0.3	0.56	0.100	-0.004	12/15/08	78	628	115	10	572	361	1075	2.99	113	2.98	105	27.6	6.8	1,107	112	7
9229	U715	Brinks Lead Gun 488R	-1.0	18	42	7	15	0.5	0.32	0.020	-0.004	12/15/08	80	622	114	10	590	361	1085	2.95	111	3.01	106	35.2	6.5	1,093	111	7
9230	U718	SR Tatanka Warrior P425	-0.4	14	36	16	23	0.5	0.52	-0.010	-0.002	12/21/08	86	568	103	10	520	355	998	2.85	107	2.81	99	33.9	6.1	1,017	103	7
9231	U719	PR ELIXIR 698L3	-0.1	28	52	6	20	0.5	0.28	0.100	0.005	12/23/08	84	578	106	10	530	353	980	2.68	101	2.78	98	31.5	6.9	1,006	102	7
9232	U721	PR ELIXIR 698L3	-1.2	24	43	11	23	0.7	0.05	0.100	0.009	12/24/08	78	536	98	10	482	352	886	2.40	90	2.52	89	31.2	5.4	921	94	7
	32	Total Bulls	-0.7	26	48	13	26	0.6	0.36	0.034	-0.002		80	631	104		607	373	1,054	2.66	100	2.83	100	33.3	6.1	1062	102	

MARK YOUR CALENDARS! Bulls on SVF•SR ALLIANCE Program Test 2009-1 and Test 2009-2 will sell in Spitzer Ranch Performance Tested Bull Sale on Saturday February 27, 2010

GREETINGS, WHAT'S UP WITH "SALLY VALLEY"

Since David Vaughan has spent most of the past month in court (as an Attorney, not a suspect), there is a ghost writer for this column. The guilty party shall go unnamed.

The entire Sally Valley Crew has been extremely busy calving out a few over 200 head of Fall Calving Cows since you received our Fall Newsletter. Of course they also had to be rebred and our system for Fall Calving Cows is a little different. Heifers and cows, lagged two weeks later, are synchronized and bred AI only one time and then placed with bulls. Since we own many of the bulls we use AI, they are often pastured with the same bull as the AI service.

This allows us to work around Thanksgiving and get bulls turned out before Christmas. Of course there are things to do every day on an operation this size, but we try to alternate who gets time off before and after Holidays so everyone gets a break. It never seems to work out quite fair, but every man on our crew is amazingly professional and they take it all in stride. When you come to the sale, we hope you will take a minute or two to get acquainted with some of the finest men to work a cattle operation.

Of course we have already mentioned the rain and mud we have been fighting all fall and winter. It gets pretty unnerving to tell the crew that they have to move baby calves out of creek bottom pastures with boats. Seems like we all have to contend with the whims Mother Nature throws our way and just do the best we can. But it can be a little discouraging when one is soaked to the skin and freshly unrolled hay is floating. However, our crew relishes tall tales and they can sure embellish stories into some that will certainly rival those of

Baxter Black.

One of the other projects we are working on in our "spare" time is creating a Salacoa Valley Farms • Spitzer Ranch ALLIANCE Semen Sales Catalog. Both of us have sold some semen from time to time, but this will make things easier for you, our customers. You will be able to evaluate the performance records, EPDs and pedigrees on individual bulls where we have semen available at very reasonable prices. We will additionally include current pictures of many of the bulls. We will have this Semen Sales Catalog available at the bull sale and you can request one after that date if you cannot make the sale.

Finally we want to quickly summarize some of the SVF • SR Alliance feedlot performance and carcass data. One of our customers fed three pens of crossbred steers sired by SVF • SR Bulls in Central Kansas. Average performance of the total 141 steers in the three loads was an overall Average Daily Gain (ADG) of 4.94 # per day. And these steers had a Dry Matter (DM) Feed Conversion of 5.42 # of feed per # of gain. Steers were sold live with no carcass data available.

We additionally fed 72 steers and 21 heifers which were the bottom end of the spring 2008 Salacoa Valley Farms calf crop. These calves went on feed at Decatur Beef Alliance, Oberlin, KS weighing 534 #, were fed for 184 days and had an ADG of 3.78 # with a DM Conversion of 5.55 # feed per # of gain. Finished animals had a hot carcass weight of 805 # with a 13.5 sq. in. rib eye area and Yield Grade (YG) of 2.57. They were 45.7% YG 1s and 2s and 50% YG 3s. Quality grades were 65% grading CHOICE or better and 35% grading SELECT PLUS. And, 24% of these straight-bred Brangus received designation as Certified Angus Beef (CAB).

POINTS TO PONDER

"A man is born beside the road to death. To die is not so much, it is inevitable. The journey is what matters, and what one does along the way. And it's not that he succeeds or fails, only that he has lived proudly, with honor and respect, then he can die proudly."

---Ronan Chantry,
Character in the Ferguson Rifle
By Louis L'Amour

"Any man worth his salt will stick up for what he believes right, but it takes a slightly better man to acknowledge instantly and without reservation that he is in error."

---Andrew Jackson

"Great men are true men, the men in whom nature has succeeded. They are not extraordinary – they are in the true order. It is the other species of men who are not what they ought to be."

---Henri Frederic Amiel

"Be yourself. Everyone else is taken"

---Unknown

"It ain't bragging if you done it."

---Dizzy Dean

"The reasonable man adapts himself to the world; the unreasonable man always persists in trying to adapt the world to himself. Therefore, all progress depends upon the unreasonable man."

---George Bernard Shaw

"Most men are as much of a man as they, by God's grace, have truly made up their minds to be."

---John C. Spitzer

THE CURVE BENDER INDEX

In our Fall 2009 Newsletter we promised our readers an absolutely complete and thorough discussion of the CURVE BENDER INDEX (CBI) exclusive to the Salacoa Valley Farms • Spitzer Ranch Alliance. We want to explain why it was created, how we arrive at the CBI and how we think it is best used.

WHY THE CBI? The entire beef industry basically focuses on live calves and rapid growth to either weaning or yearling ages, depending on when calves are sold (number of live calves x weight = pounds to sell), as the main drivers of increased profit. The CBI, therefore, focuses on the antagonistic goals of **lowering birth weights** and **increasing growth** - at the same time. If you have studied your lessons as hard as we believe you have, you know that in general the fastest growing, biggest calves always seem to have heavier birth weights; with all the potential problems of calving difficulty and even calf death.

BUT, there have always been those bulls that sire calves that are born with lower birth weights and yet defy genetic antagonisms and gain very rapidly and have heavier weaning and yearling weights. In the beef industry these bulls have historically been known as “*Curve Benders*” and we focus our genetic selection programs on producing lots of them.

HOW IS CBI CALCULATED? In calculating this index, we first categorize bulls into three categories based on their Top Percent Rank for Lower Birth Weight EPD. This categorical ranking is arrived at as follows: Bulls ranking in the Lower Top 25% for birth weight EPD are categorized as Top 1%; Bulls ranking over 25% but still in the Lower Top 50% for birth weight EPD are categorized as Top 25%; and Bulls ranking heavier than 50% for birth weight EPD are categorized as Top 50%. This is very logical as scientific

data and our own in-herd experiences, as well as those of our customers, tell us that while there may be some value for a bull being in the Lowest Top 25% for birth weight EPD, Brangus Bulls ranking in the Lowest Top 50% for birth weight are certainly suitable for use on heifers. And, the breed produces very few, if any, Brangus Bulls that will cause calving problems when bred to mature cows.

Our calculation then adds this Categorized Top Percent Rank for LOWER BW EPD to the actual Top Percent Rank for HEAVIER YW EPD and multiplies that by 100 to convert the percent back to a whole number. That number is then subtracted from 150 to arrive at the CURVE BENDER INDEX. (Example: A bull categorized in the Top 1% for LOWER BW EPD and in the Top 15% for HEAVIER YW EPD would have a CURVE BENDER INDEX of 134 ($1\% + 15\% = 16\%$ and $16\% \times 100 = 16$ and $150 - 16 = 134$).

Recognize bulls with a HIGHER CURVE BENDER INDEX are in the Top Percent Rank for both the traits of LOWER BW EPD and yet HEAVIER YW EPD. Furthermore to be a low BW EPD bull and at the same time be a high YW EPD bull means that the average daily gain (ADG) from birth to weaning or yearling age must also be much greater.

Also recognize that the maximum numerical value is actually a CBI of 148. We publish a CBI on each bull as well as whether his CBI falls in the First Quartile (111-148), Second Quartile (74-110), Third Quartile (37-73) or Fourth Quartile (0-36).

HOW TO USE THE CBI? Recognize right from the start that while the CBI does an excellent job, the CBI only accounts for the two traits of smaller birth weights and increased growth. Further recognize that there is probably very little difference among bulls ranking in the same Quartile for CBI. In other words, a bull with a CBI of 115 and another bull with a CBI of 140 would both be in the First Quartile for

CBI. While I might like a higher numeric value for CBI, there are other considerations maybe more important.

If you sell all of your calves at weaning, or even if you background and then sell all calves as yearlings you could rely on the CBI entirely as your bull selection criteria. However, it is never quite that simple for most of us! The CBI is a great place to begin, but it is absolutely essential to select bulls that will complement your cows, add genetics that may be lacking in your particular cow herd and sire calves that meet your production goals.

Before selecting which bulls to give a closer look, you need to identify what you need the bull to do (a job description so to speak). While we cannot possibly cover every situation, as all production scenarios have different production goals and may require different bulls, we will discuss a few generalities.

- If you need a bull to breed to heifers, we suggest you select from among those bulls with the “Calving Ease Flag”. Those bulls have been identified as bulls with the least risk for calving problems when bred to heifers.

- If you are retaining ownership on your calves through the feedlot and the packing plant, you need to use the CBI and additionally look at EPDs and Ultrasound Scans for rib eye area (REA) and intramuscular fat or marbling (%IMF) as well as the growth traits.

- If you want to raise those fantastic Brangus crossbred heifers as replacements, there is a host of other considerations. Here you would need to look at EPDs for milk (MK) and maternal ability (TM). Also consider the EPD and actual measurements for scrotal circumference (SC) as it strongly influences the fertility of daughters of a particular bull. You might additionally study the dam production summary we provide for every bull in each of our sales.

- It may or may not be important to evaluate frame scores on a potential

bull purchase. Everyone seems to have a different opinion of the optimum frame score most in demand by the feedlot and packing sectors of our industry. And that is still further complicated by cow efficiency as it relates to cow size and environmental adaptability, which we as cattlemen actually know very little about. We at Salacoa Valley Farms and Spitzer Ranch have studied hard and strongly believe your best bet is to try to keep the average frame score of your cows somewhere between a 5.5 and 6.5.

Therefore, if you have a herd with a lot of cows with frame scores of 7+; look for a bull in the frame score 5 range. Conversely, if you have a lot of frame score 5 minus cows, you may need a bull with a 7+ frame score to get you back to a practical goal of averaging a cow herd frame score somewhere between 5.5 and 6.5.

Finally, use the CBI as it is intended, but recognize bull selection as the complicated process it really is. The CBI will get you a handle on the two most important traits – *first is the calf born alive and vigorous and second will he grow.* Careful evaluation of your cow herd and what may or may not need to be changed (up or down) will lead you as to which other genetic traits need your attention.

HOW IS THE SVF•SR SALE ORDER DETERMINED? We have several bulls which we believe have the performance data and visual phenotype to go into other Registered Brangus Herds and these bulls will be the first to sell. After those bulls sell, we will sell all other bulls in order by our CURVE BENDER INDEX. You can then look at other attributes you need to improve in your herd (more, or maybe less, milk, REA, marbling, frame etc.) and select your choice knowing that bulls will sell in order based on a combination of low birth weight and high yearling weight, or rapid growth.

We are well aware you studied your lessons before the sale. You already

know that if you compare Salacoa Valley Farms and Spitzer Ranch Brangus Bulls to those of other operations, our Average Bull has a Lower Birth Weight EPD and a Heavier Yearling Weight EPD than most everyone else. These bulls are bred to be that way and you will find the last bull in the sale order to still be useful to either reduce birth weight and/or to increase growth.

We will be pleased to help if you don't understand, but once you get used to the system it is easy to follow. We hope you will agree that this is a more progressive as well as a tremendously more performance oriented and genetically more powerful approach to establishing a sale order than just looking at bulls and deciding which bulls "look the best" on sale day.

SPITZER FAMILY NEWS

For those of you who don't know Patricia, or don't know her well, let me tell you that the past almost 42 years now have been anything but boring! For about 40 of those years I have been hearing about how badly Tricia wanted to travel the New England states in the fall. We were "going to fly up, rent a car and just drive and enjoy the beauty of the fall colors till we see something interesting." Kids got in the way, University responsibilities got in the way and a cow herd and two forty thousand bird capacity commercial broiler houses got in the way. Kids are not home any more, Doc took an early retirement, we quit growing chickens and cows don't start calving until early November – perfect. Let's not put it off any longer, "we're going this year".

Excellent! Being the obedient husband I always am I spend hours on the computer plotting flight details, planning a route and searching out potential bed-and-breakfast hosts that might work. After endless effort on my part, Tricia races into the office one

evening and says, "I've changed my mind, we're going to Kansas". Being one of those husbands, just like you, who haven't a clue on how this husband and wife relationship works, I reminded her that we were just in Kansas in May. I will save you the details and just tell you that we flew to Wichita, rented a car and drove to Pratt, KS on October 10th.

Of course we went on Saturday since Hannah-8 and Daniel-6 had started school. We had a blast as usual. A weekend with the two of them plus Haley Jo-4 and Sammie-2 kept us running from dawn to dusk. Then come Monday we only had the two little ones to contend with. Since we could only be there a short time Brian and Loretta pretty well let us do whatever we and the kids wanted. Have the rest of you Granddads had the pleasure of wrestling four grandkids all at one time? Discipline kind of flew out the window and it probably took several days to restore order after Grampa left.

One of Patricia's greatest pleasures was always reading to our three boys. You should see the smile on her face when she has grandkids all gathered round listening to some of those same books. Oh, yes. The leaf colors on all three trees we saw in Kansas were beautiful.

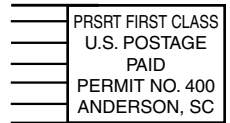
Other than that trip, we have stayed pretty close to home. We started calving November 7 and had 35 calves by November 28. Now it is pretty boring having one or two a week. We only breed for 65 days AI and bulls combined, but the remaining 15 will stretch out till mid-January I suppose.

The Kansas Spitzers will not be here for Christmas, but Jason and Ben promised to be here Christmas Eve and spend a few days. We will spend a pretty quiet, but blessed Christmas Season. Sure hope you and your family do as well.

SALACOA VALLEY FARMS • SPITZER RANCH
SF ALLIANCE

• Two Operations with 52 Years in Business for the Professional Cattleman •
• Performance Genetics BUILT, not BOUGHT •

1511 HWY 59
Fair Play, SC 29643
RETURN SERVICE REQUESTED



SPITZER RANCH

Performance Tested Brangus Bull Sale
AND
Brangus Gold Commercial Female Sale

Saturday, February 27, 2010 at 1:00 PM
Calhoun Stockyards Sale Facility
Calhoun, GA

Exit West off I-75N at Exit 312, Go West on GA HWY 53 for 5.8 miles (Barn on Left)